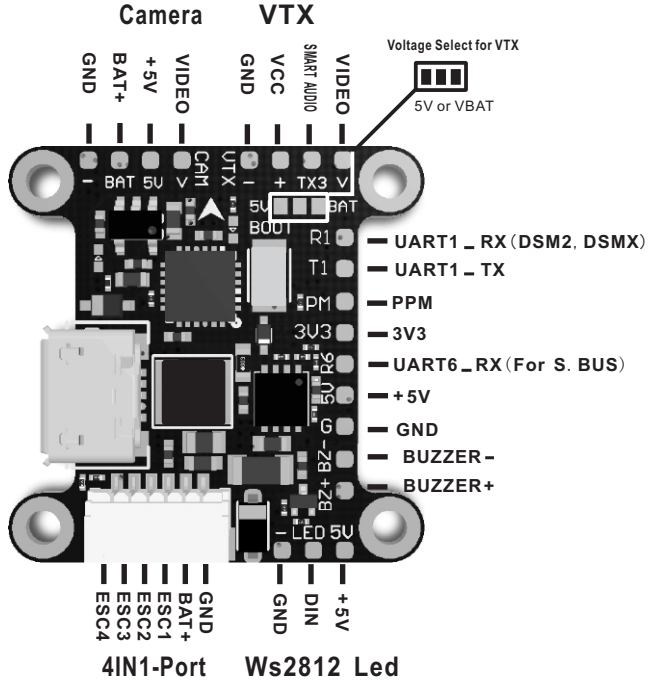


MICRO F4 Flight Controller

Specification:

Input: 2-5 Cell LiPo
 Bec: 5.1V@3A
 Firmware: OMNIBUS F4SD
 Size: 24x24 mm
 Hole distance: 20x20 mm



MICRO 12A 4IN1 ESC

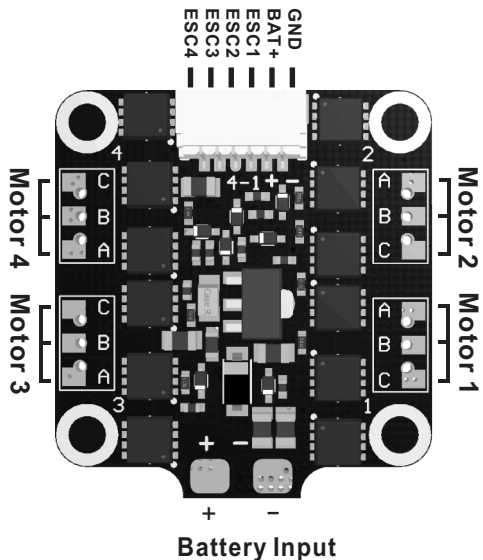
Specifications:

Continuous Current: 15A
 Burst Current: 15A ≤ 10S
 Input Voltage: 2S-3S LiPO
 BEC: No
 Dimensions: 24x26mm
 Firmware: BLHeLi_S(QH-10)
 Input signal: PWM, Oneshot125, Oneshot42,
 Multishot, Dshot150&Dshot300&Dshot600

Notice:

If 4 cell LiPo used, strongly recommended to sold the aluminum electrolytic capacitor.

Flight Controller Port



Specification:

Input: 5-5.5V
Current: 280mA@5.5V@25mW;350mA@5.5V@100mW
Frequency range: 5658-5917MHz
Size: 13x24 mm
Weight: 1.5 g

Frequency table:

CH FR	1	2	3	4	5	6	7	8
A	5865	5845	5825	5805	5785	5765	5745	5725
B	5733	5752	5771	5790	5809	5828	5847	5866
E	5705	5685	5665	5645	5885	5905	5925	5945
FS	5740	5760	5780	5800	5820	5840	5860	5880
R	5658	5695	5732	5769	5806	5843	5880	5917

Disclaimer: please make sure the selected frequency is compliant to your local laws and regulations. The manufacturer will not be responsible for any violation of laws and hence resulted lawsuit or penalties.

Power Indicator & PitMode:

Under normal working mode, the flicker frequency of green Led corresponds to the current power. Flashes at a frequency of 1 =25mW;Flashes at a frequency of 2 =100mW; Turns off=0 mW. Quickly click the button twice can closed or open the Vtx.

Setup wizard: