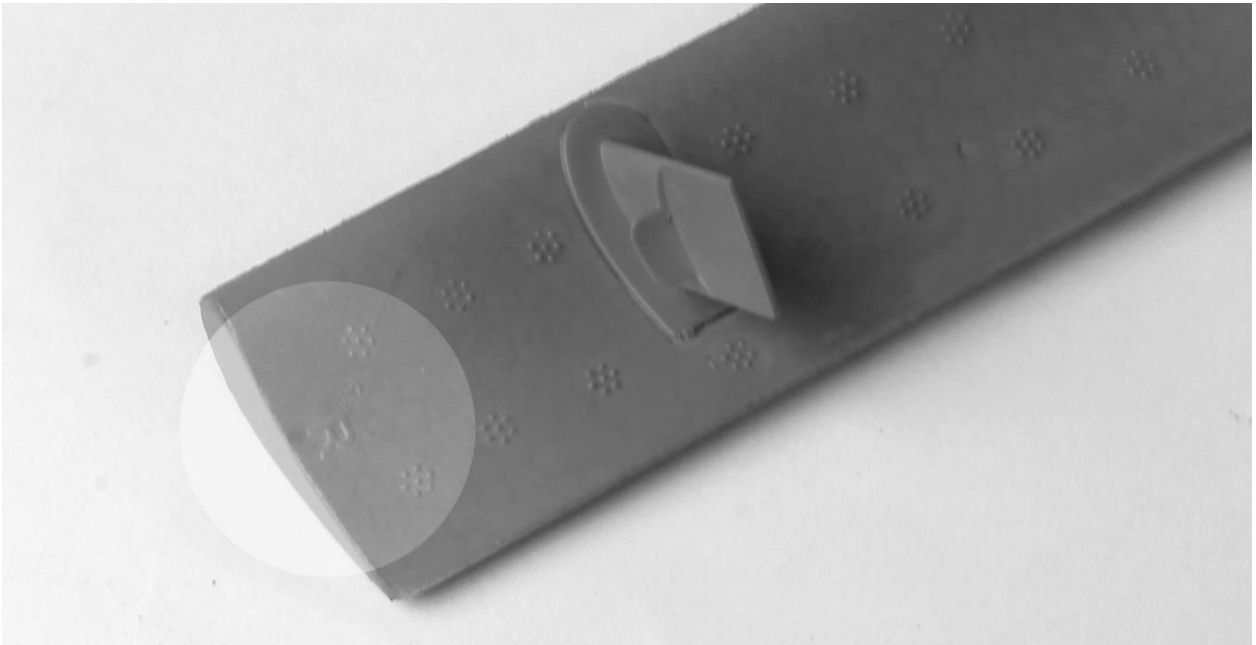


## CESSNA 170 LEADING EDGE SLAT INSTALLATION INSTRUCTIONS

**Required Tools/Adhesives:** #11 Hobby Knife, Medium CA (or 15-minute Epoxy), Paper Towels

1. Locate the right and left slat sets. Note that these are marked on bottom side at the end of each slat for your convenience. Set one set aside, and locate the proper wing panel for the set you did not place aside. Note that the longer slat section is for the tip of the wing, and the shorter slat section is for the root of the wing.



2. Note the slat locating marks at the leading edge of the wing. These have been molded into the wing for your convenience in installing the slats. Use a #11 hobby knife to cut a 1mm (0.04-inch) slot at each of these marks. Test fit the slat as needed to confirm proper fitment.



3. With the slat removed, apply medium CA (or 15-minute epoxy) into each of the slots created in the previous step. Insert the slat tabs into each of the slots, being sure that the slats are curved in the proper orientation (reference the image at the end of this instruction sheet). Wipe away any excess glue with paper towels as needed. **Note: The use of CA accelerator can damage the paint. If using accelerator, allow it to fully dry before handling the part.**



4. Repeat the above steps for the other wing panel and slat set.

