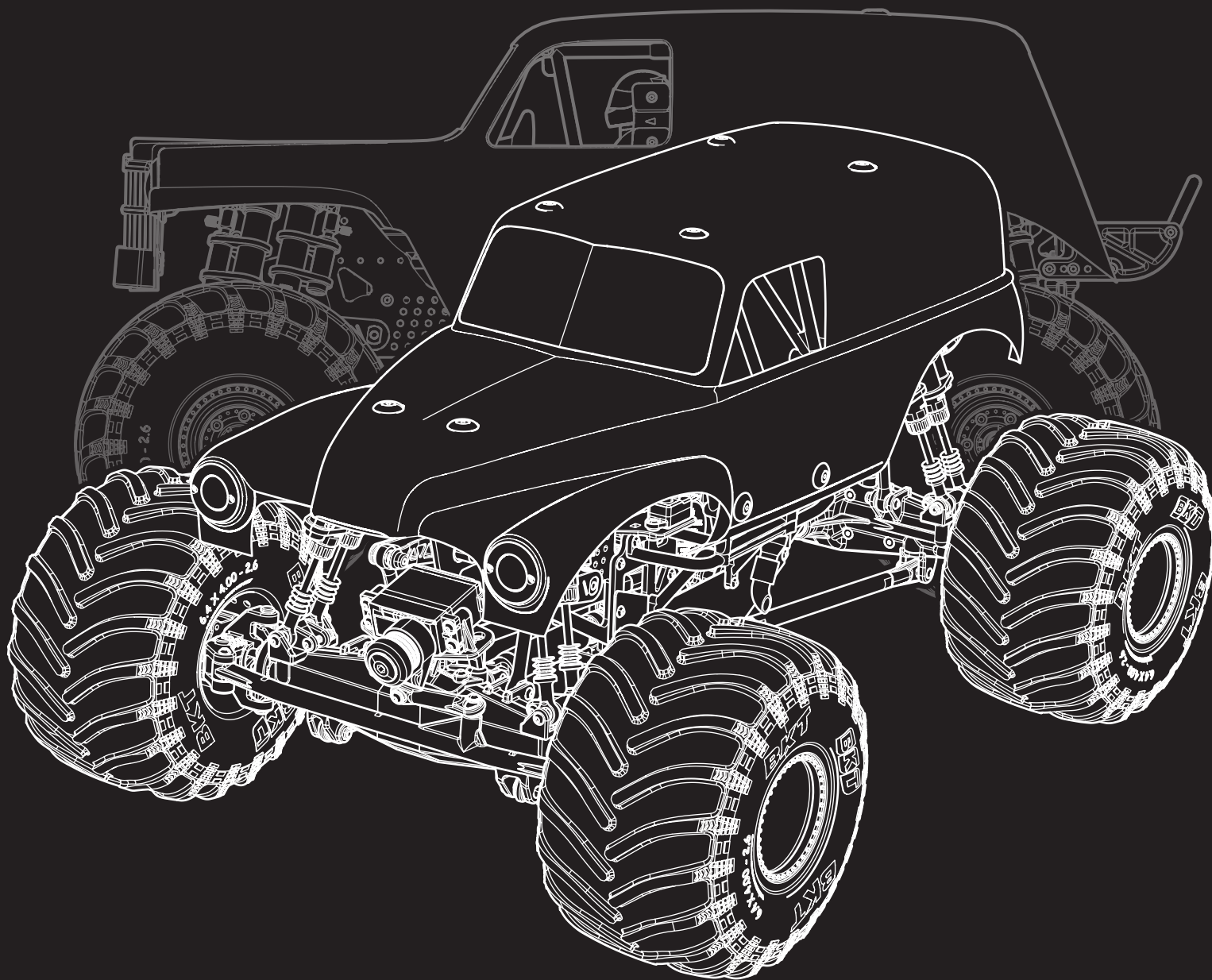




QUICKSTART GUIDE



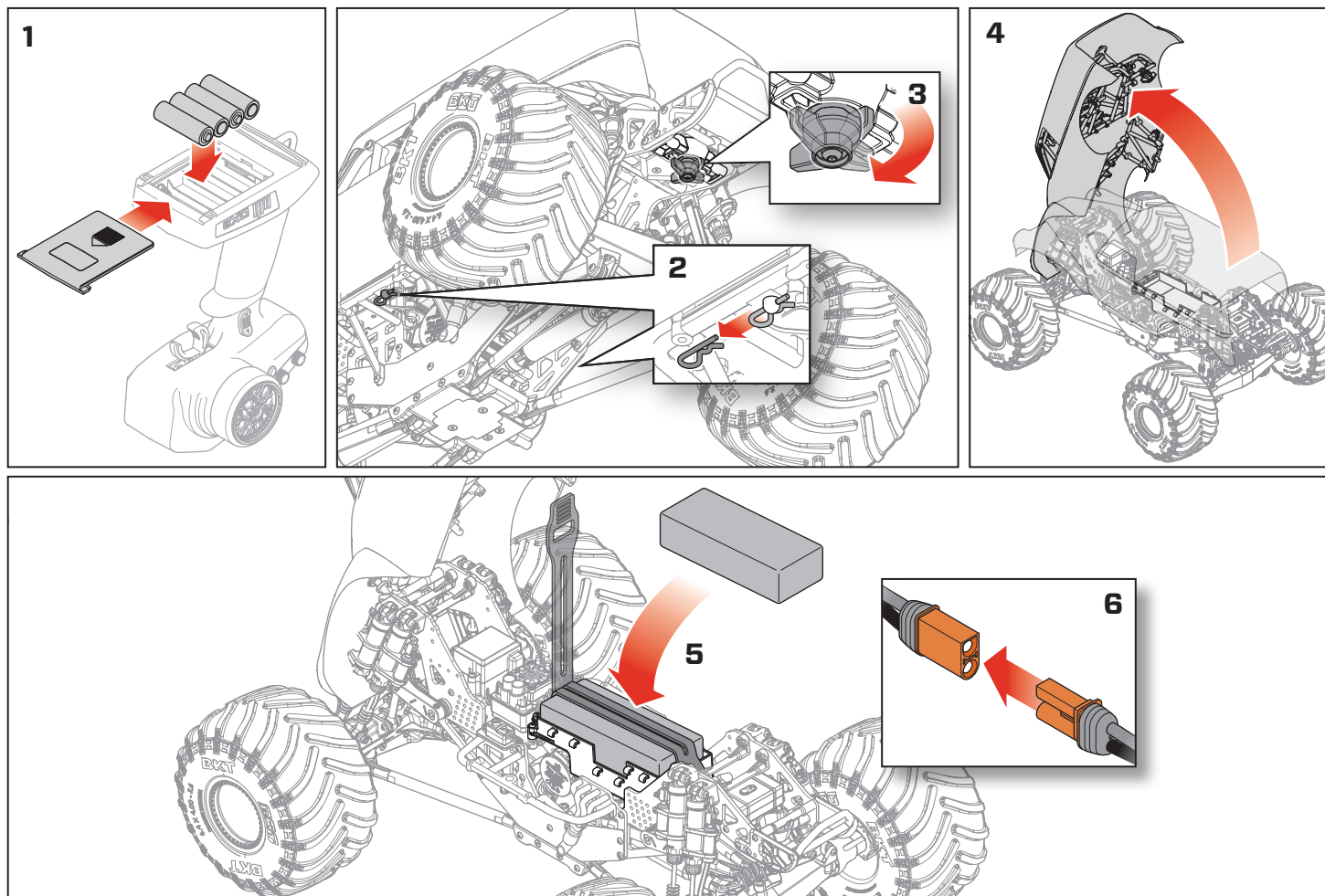
4X4 RTR MONSTER JAM[®] TRUCK

LOS04028

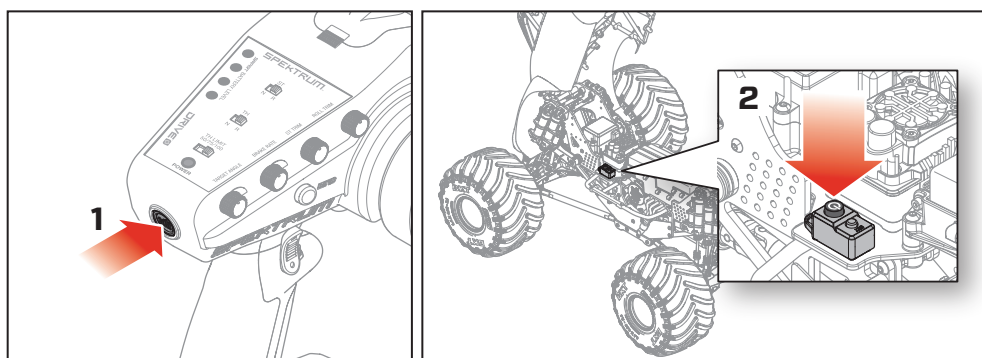
Created 12/24 1095200



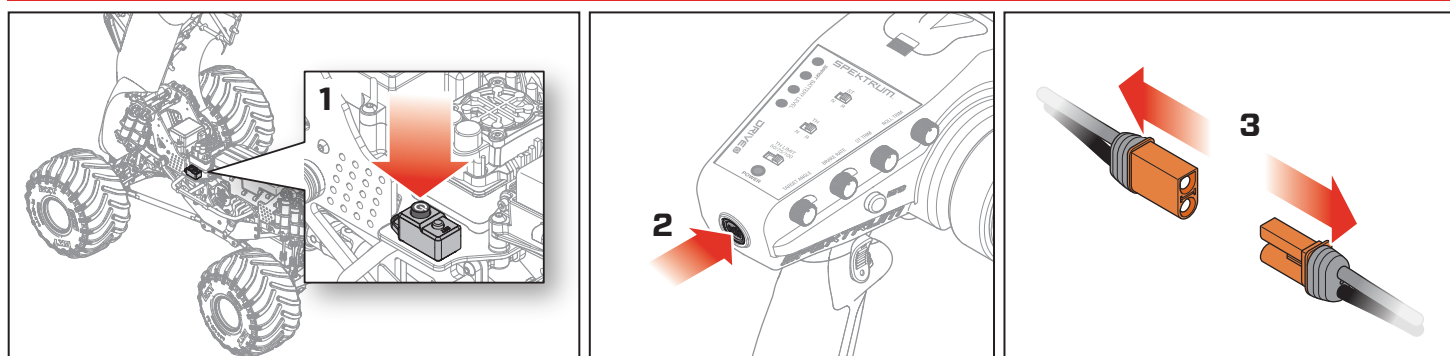
Install the Battery



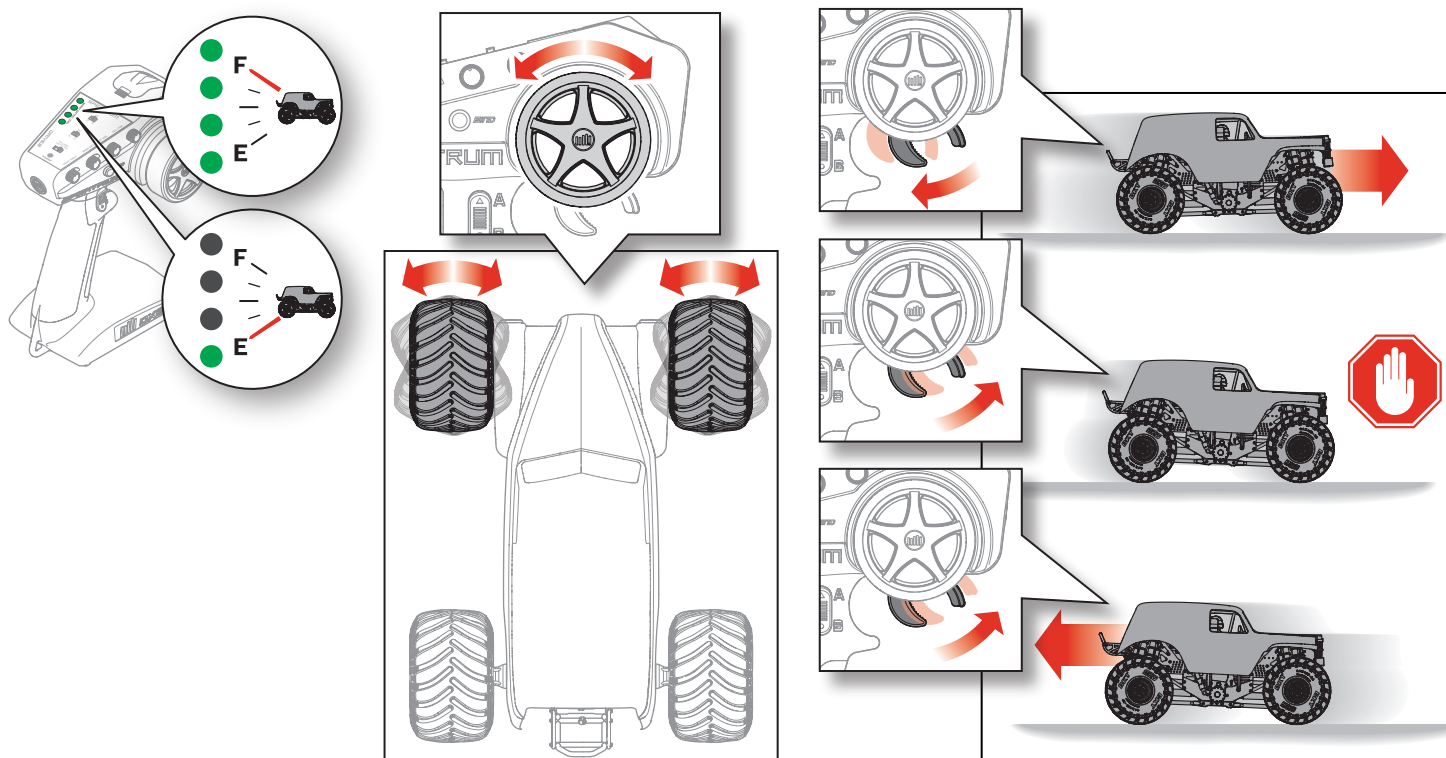
Power On



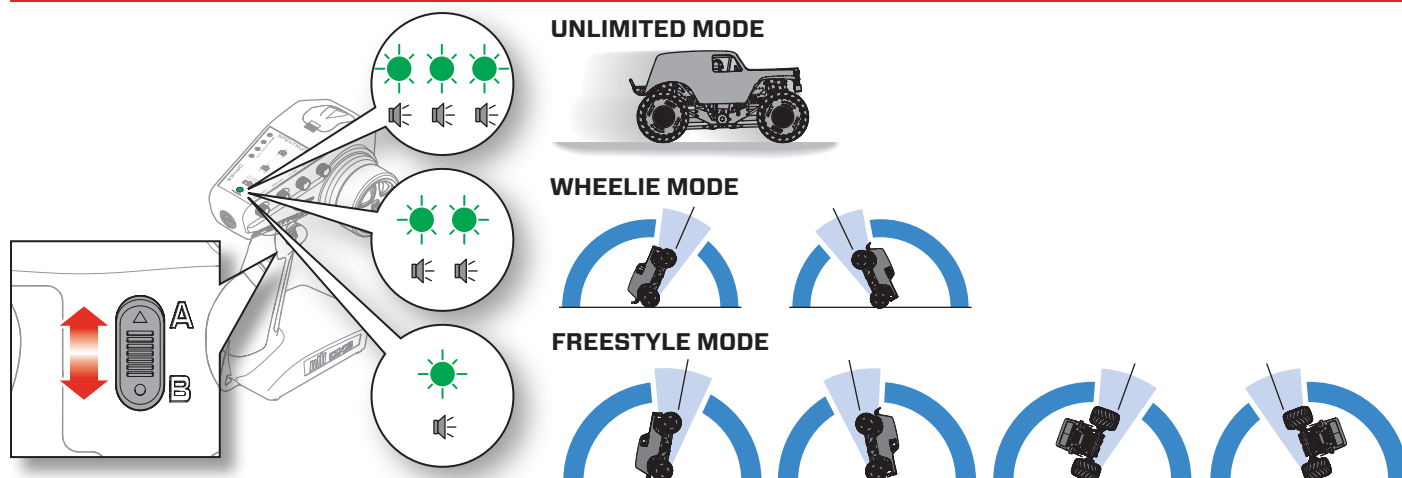
Power Off



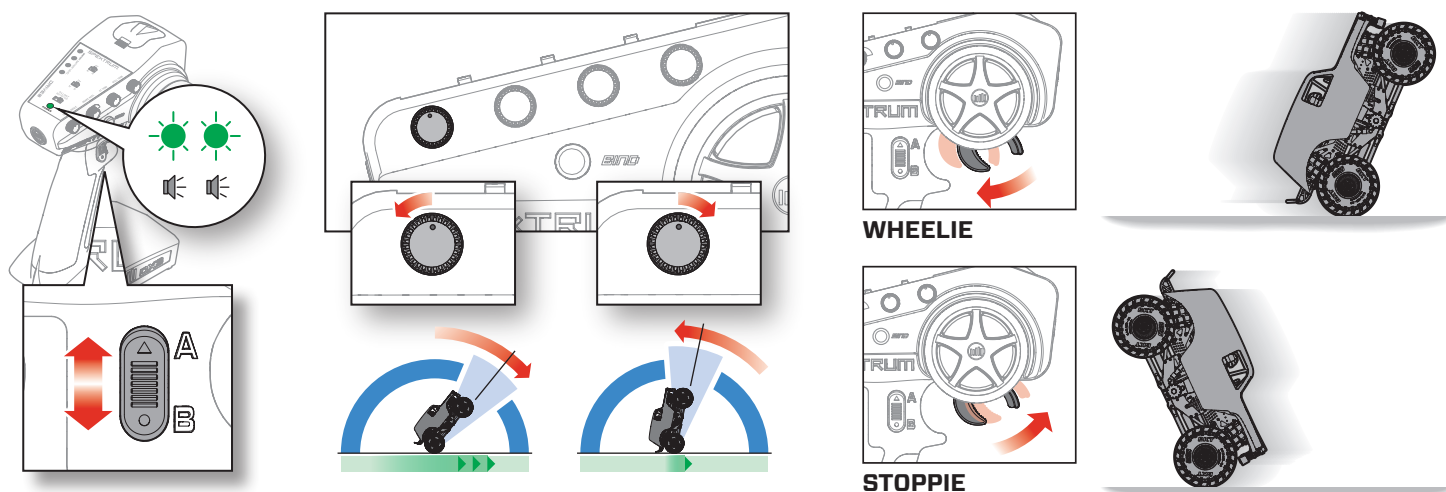
Transmitter Controls



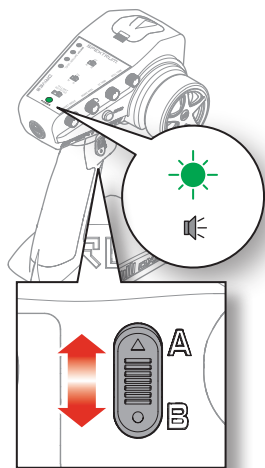
Drive Modes



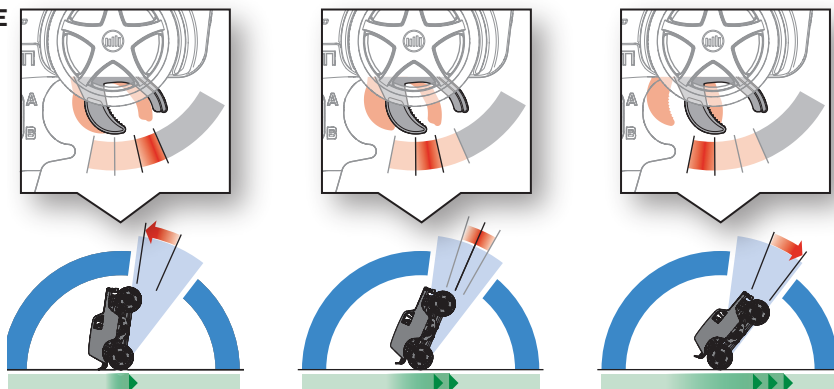
Wheelie Mode



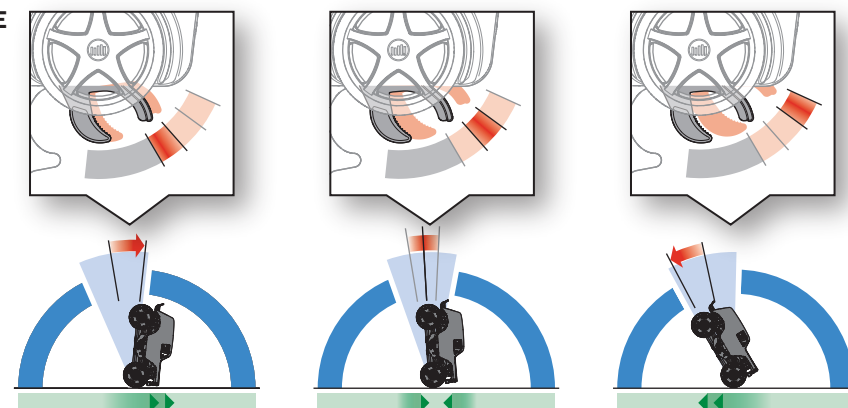
Freestyle Mode



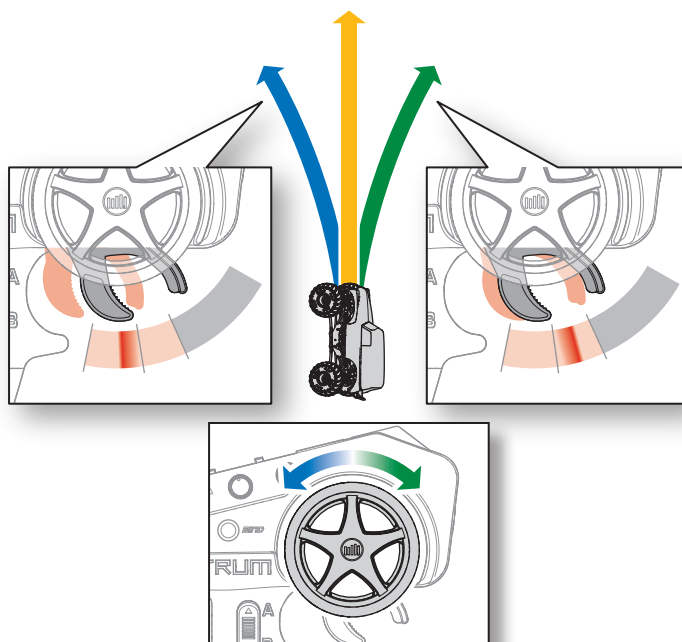
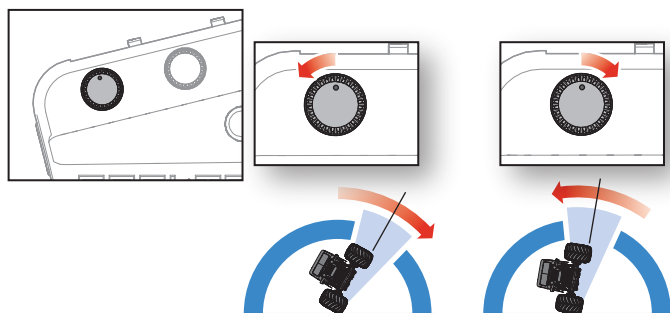
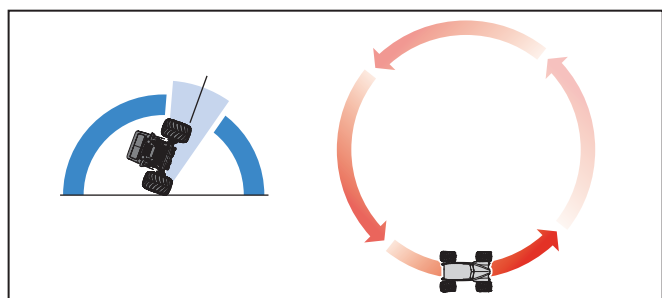
WHEELIE



STOPPIE



BICYCLE



Scan the QR code and select the Manuals and Support quick links from the product page for the most up-to-date manual information.



LOS04028

©2024 Horizon Hobby, LLC.

Losi, Firma, DRIVE, IC5 and the Horizon Hobby logo are trademarks or registered trademarks of Horizon Hobby, LLC.

The Spektrum trademark is used with permission of Bachmann Industries, Inc.

Feld Motor Sports, Inc., Monster Jam™, United States Hot Rod Association™, USHRA™, Grave Digger™, Son-Uva Digger™ and all related logos and characters/designs are trademarks used under license by Feld Motor Sports, Inc. All rights reserved. BKT™ logos are trademarks of BKT™ used under license.

All other trademarks or registered trademarks are property of their respective owners.

Other patents pending.

Created 12/24

LOS04028

1095200