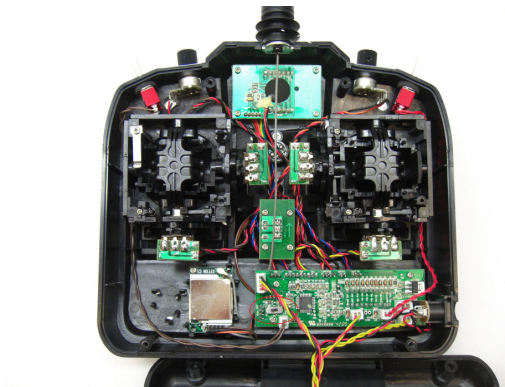


## Instructions for Mode Change of the Eflite HP6DSM Transmitter.

Compiled by Modelflight [www.modelflight.com.au](http://www.modelflight.com.au)

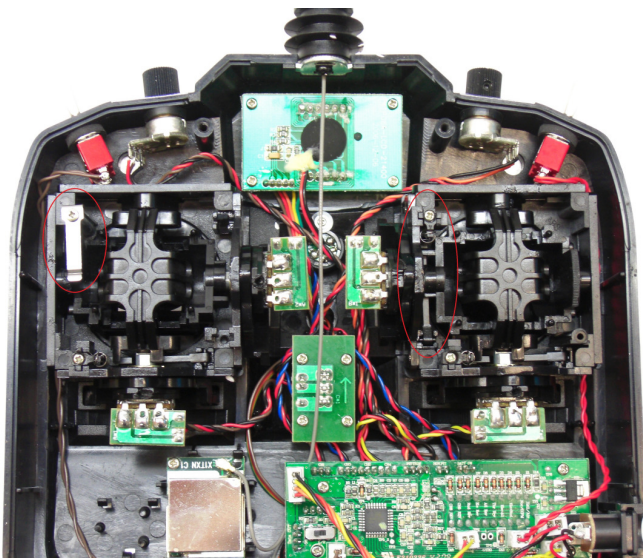


Remove the 4 screws holding the back cover and tilt back open being careful of the wires joining front to back cases.



Locate the Dip Switch on the board in the lower right on the front case.

Left is Mode 1. Right is Mode 2



Swap the Throttle pressure plate and return Spring mechanisms around.

Refit the back case and screw up the 4 back case screws.

Test that the mode change was successful.